

**St. Johns County School District**  
**Transition IEP Information Guide for Families**

**Purpose**

This guide is to be reviewed with families in hard copy format at each annual Transition IEP meeting. Documentation of review is to be provided in the appropriate sections within the IEP. A copy of the guide will be emailed home to families and posted on each school's website. Please contact your school-based LEA for more information on locating the document, as needed.

For questions regarding St. Johns County School District Transition Services, please contact Leigh Ann Hale, [Leighann.hale@stjohns.k12.fl.us](mailto:Leighann.hale@stjohns.k12.fl.us).

### **High School Level Transition Services**

The IEP must include documentation (examples below) of the types of transition services the student is receiving in high school.

Examples include, but are not limited to:

- Accommodations
- Agency referrals
- Assistance with college enrollment
- Assistance with postsecondary goal attainment
- Community based instruction
- Instruction in daily living skills
- On-campus job experiences/internships
- School based enterprise
- Self-determination and/or self-advocacy
- Social skills training
- Transportation services
- Volunteer activities
- Career and Technical Education classes
- Learning Strategies classes
- Support Facilitation
- Remediation Courses to meet graduation requirements
- Scholar Diploma Designation courses
- Merit Diploma Designation courses

**Deferment Information**- the IEP team must discuss how a student is working towards meeting the requirements for a Standard Diploma but potentially defer receipt of the diploma and continue to receive ESE services.

Deferring the receipt of the standard diploma is done in order to continue to receive services under FAPE. There are two parts to deferral of the standard diploma. First, a student must have an IEP that “prescribes special education, transition planning, transition services, or related services through 21.” This is being interpreted to mean that a student must require services to be successful. Second, a student must be enrolled in one of several specific educational programs. The programs include:

- Accelerated College Credit- dual enrollment, early admission, advanced placement, International Baccalaureate, AICE
- Collegiate High School Programs
- A Structured Work Study, Internship, or Pre-Apprenticeship Program (SJCS Transition Programs)

Students and IEP teams make the decision to defer during the year in which they are expected to meet all the requirements for a standard diploma; the decision is documented in the student’s IEP. Students must be on track to meet all credit, grade point average (GPA) and testing requirements for the standard diploma before deferment can begin. Students with disabilities who earn a standard diploma and do not defer are NOT eligible for any further services from the school district. Considering deferral of the standard diploma is particularly relevant for students with significant cognitive disabilities. While in deferment status, students may have flexible scheduling. For example, they may not be going to school every day, or they may have a shorter daily schedule. Student attendance is expected. Students may request their diploma during the deferment time period and exit high school. Deferment is only required once and can end at any time requested by the family or adult student, or upon the 22<sup>nd</sup> birthday, whichever comes first.

## Academic Advisement Flyer

### Standard Diploma Requirements

#### Academic Advisement – What Students and Parents Need to Know

##### What are the diploma options?

Students must successfully complete one of the following diploma options:

- 24-credit standard diploma
- 18-credit Academically Challenging Curriculum to Enhance Learning (ACCEL)
- Career and Technical Education (CTE) Pathway
- Advanced International Certificate of Education (AICE) curriculum
- International Baccalaureate (IB) Diploma curriculum

##### What are the state assessment requirements?

Students must pass the following statewide assessments:

- Grade 10 English Language Arts (ELA) or a concordant score
- Algebra 1 end of course (EOC) or a comparative score

Refer to [Graduation Requirements for Florida's Statewide Assessments](#) for concordant and comparative scores.

Students enrolled in the following courses must participate in the corresponding EOC assessment, which constitutes 30 percent of the final course grade\*:

- Algebra 1
- Geometry
- Biology 1
- U.S. History

<sup>+</sup>Special note: Thirty percent not applicable if not enrolled in the course but passed the EOC (credit acceleration program [CAP]).

##### What is the difference between the 18-credit ACCEL option and the 24-credit option?

- 3 elective credits instead of 8
- Physical Education is not required
- Online course is not required

##### What is the difference between the CTE Pathway option and the 24-credit option?

- At least 18 credits are required
- 4 elective credits instead of 8
  - 2 credits in CTE courses, must result in completion and industry certification
  - 2 credits in work-based learning programs or up to 2 elective credits including financial literacy
- Physical Education is not required
- Fine and Performing Arts, Speech and Debate, or Practical Arts is not required
- Online course is not required

##### 24 Credit Standard Diploma

4 Credits ELA
<ul style="list-style-type: none"><li>• ELA 1, 2, 3, 4</li><li>• ELA honors, Advanced Placement (AP), AICE, IB and dual enrollment courses may satisfy this requirement</li></ul>
4 Credits Mathematics*
<ul style="list-style-type: none"><li>• One of which must be Algebra 1 and one of which must be Geometry</li><li>• Industry Certifications that lead to college credit may substitute for up to two mathematics credits (except for Algebra 1 and Geometry)</li><li>• An identified computer science** credit may substitute for up to one mathematics credit (except for Algebra 1 and Geometry)</li></ul>
3 Credits Science
<ul style="list-style-type: none"><li>• One of which must be Biology 1, two of which must be equally rigorous science courses</li><li>• Two of the three required course credits must have a laboratory component</li><li>• Industry Certifications that lead to college credit may substitute for up to one science credit (except for Biology 1)</li><li>• An identified computer science** credit may substitute for up to one science credit (except for Biology 1)</li></ul>
3 Credits Social Studies
<ul style="list-style-type: none"><li>• 1 credit in World History</li><li>• 1 credit in U.S. History</li><li>• 0.5 credit in U.S. Government</li><li>• 0.5 credit in Economics</li></ul>
1 Credit Fine and Performing Arts, Speech and Debate, or Practical Arts*
1 Credit Physical Education*
<ul style="list-style-type: none"><li>• To include the integration of health</li></ul>
8 Elective Credits
1 Online Course
Students must earn a 2.0 grade point average (GPA) on a 4.0 scale for all cohort years and pass statewide, standardized assessments unless a waiver of assessment results is granted by the IEP team for students with disabilities.

\* Eligible courses are specified in the [Florida Course Code Directory](#).

\*\*A computer science credit may not be used to substitute for both a mathematics and science credit.

Scholar Diploma Designation
<p>In addition to meeting the 24-credit standard high school diploma requirements, a student must meet all of the following requirements:</p> <ul style="list-style-type: none"> <li>• Earn 1 credit in Algebra 2 or an equally rigorous course</li> <li>• Pass the Geometry EOC</li> <li>• Earn 1 credit in Statistics or an equally rigorous mathematics course</li> <li>• Pass the Biology 1 EOC*</li> <li>• Earn 1 credit in Chemistry or Physics</li> <li>• Earn 1 credit in a course equally rigorous to Chemistry or Physics</li> <li>• Pass the U.S. History EOC*</li> <li>• Earn 2 credits in the same World Language</li> <li>• Earn at least 1 credit in an AP, IB, AICE or a dual enrollment course</li> </ul> <p>*A student is exempt from the Biology 1 or U.S. History EOC assessment if the student is enrolled in an AP, IB or AICE Biology 1 or U.S. History course; takes the respective AP, IB or AICE assessment; and earns the minimum score to earn college credit.</p>
Merit Diploma Designation
<ul style="list-style-type: none"> <li>• Meet the standard high school diploma requirements</li> <li>• Attain one or more <a href="#">industry certifications</a> from the list established (per s. 1003.492, F.S.)</li> </ul>

#### What are the additional graduation options for students with disabilities ?

Two additional options are available only to students with disabilities. Both allow students to substitute a CTE course with related content for one credit in ELA 4, mathematics, science and social studies (excluding Algebra 1, Geometry, Biology 1 and U.S. History). The two options are as follows:

- Students with significant cognitive disabilities may earn credits via access courses and be assessed via an alternate assessment.
- Students who choose the academic and employment option must earn at least 0.5 credit via paid employment.

#### What is the CAP?

The CAP allows a student to earn high school credit if the student passes an AP examination, a College Level Examination Program (CLEP) or a statewide course assessment without enrollment in the course. The courses include:

- Algebra 1
- Geometry
- Biology 1
- U.S. History



State University System (SUS)
<p>Admission into Florida's public universities is competitive. Prospective students should complete a rigorous course of study in high school and apply to more than one university to increase their chance for acceptance. To qualify to enter one of Florida's public universities, a first-time-in-college student must meet the following minimum requirements (credit earned by industry certification does not count for SUS admission):</p> <ul style="list-style-type: none"> <li>• High school graduation with a standard diploma, a minimum of a 2.5 GPA, and admission test scores meeting minimum college-ready test scores per Board of Governors (BOG) Regulation 6.008</li> <li>• 16 credits of approved college preparatory academic courses per BOG Regulation 6.002</li> <li>• 4 English (3 with substantial writing)</li> <li>• 4 Mathematics (Algebra 1 level and above)</li> <li>• 3 Natural Science (2 with substantial lab)</li> <li>• 3 Social Science</li> <li>• 2 World Language (sequential, in the same language or other equivalents)</li> <li>• 2 approved electives</li> </ul> <p><a href="#">State University System of Florida</a></p>
The Florida College System
<p>The 28 colleges of the Florida College System serve nearly 800,000 students. Colleges offer affordable and stackable workforce credentials including certificate programs, associate in science degrees and associate in arts degrees, which transfer to a bachelor's degree program. Many colleges also offer workforce bachelor's degree programs in areas of high demand. All Florida College System institutions have open-door admissions for students who earned a standard high school diploma or an equivalent diploma or successfully earned college credit.</p> <p><a href="#">Florida College System</a></p>
Career and Technical Colleges and Centers
<p>Florida also offers students 49 accredited career and technical colleges or centers throughout the state, which provide the education and certification necessary to work in a particular career or technical field. Programs are flexible for students and provide industry-specific education and training for a wide variety of occupations.</p> <p><a href="#">Career and Technical Education Directors</a></p>

#### Where is information on financial aid located?


The Florida Department of Education's Office of Student Financial Assistance administers a variety of postsecondary educational state-funded grants and scholarships.

[Office of Student Financial Assistance](#)

## St. Johns County School District Programs of Choice

Programs of Choice include high school career academies, IB and AICE acceleration programs, JROTC, St. Johns County Center for the Arts and St. Augustine High School and in middle school, a Center for the Arts program at R.J Murray Middle School. Students in 8<sup>th</sup> and 9<sup>th</sup> grade may apply for enrollment in a Program of Choice for any of the St. Johns County School District high schools. There are application rules and a timeline that must be followed in order to be considered. Students in 5<sup>th</sup> grade may apply for R.J Murray Middle School's St. Johns County Center for the Arts (SJCCA) program.

## Academies and Programs of Choice

	Allen D. Nease	Bartram Trail	Creekside	Pedro Menendez	Ponte Vedra	St. Augustine	St. Johns Technical	Tecol Creek
Advanced International Certificate of Education						X		
Architectural and Building Sciences				X				
Bionotechnology and Medical Research					X			
Coastal and Water Resources							X	
Collegiate High School				X				X
Communications	X							
Culinary Arts							X	
Design		X						
Emerging Technology			X					
Engineering and Environmental Sciences			X					
Flagler Health+ Academy of Healthcare Professionals				X				X
Hospitality and Tourism	X							
Information Technology		X			X			
Innovation in the Built Environment								X
International Baccalaureate	X			X				
International Business and Marketing					X			
Law and Homeland Security						X		
Leadership in Emerging Technology								X
AFJROTC-Air Force		X						
AJROTC-Army						X		
NJROTC-Navy	X							
St. Johns County Academy of Future Teachers			X			X		
St. Johns County Center for the Arts						X		
St. Johns County Aerospace Academy						X		
Stellar Academy of Engineering	X							
VyStar Academy of Business		X		X				

STEM Academy (Science, Technology, Engineering, Math)

Additional information and the online application may be found by visiting the Academy website:

<https://cte.stjohns.k12.fl.us/>

## **High School Career Academies**

A Career Academy provides an opportunity for a group of students to enroll in a specific set of courses associated with a designated career area. Each Career Academy has the following components:

- A recommended sequence of courses.
- A capstone project, a work site experience, a research project studying careers in the academy area, or some other experience in which students learn more about the career cluster with which the academy is affiliated.
- A demonstrated need for employees within the Career Cluster.
- An advisory board consisting of business leaders in the Career Cluster.
- Adherence to specific rules established by the school system.
- Hands-on project-based learning throughout the four years of the program.

### **Allen D. Nease**

- Academy of Hospitality and Tourism
- Communications Academy
- Stellar Academy of Engineering

### **Bartram Trail**

- Design Academy
- Information Technology Academy
- VyStar Academy of Business and Finance

### **Creekside**

- Academy of Emerging Technology
- Academy of Engineering and Environmental Science
- St. Johns Academy of Future Teachers

### **Pedro Menendez**

- Academy of Architectural and Building Sciences
- VyStar Academy of Business and Finance
- Flagler Health+ Academy of Future Healthcare Professionals

### **Ponte Vedra**

- Academy of Biotechnology and Medical Research
- Academy of International Business and Marketing
- Academy of Information Technology

### **St. Augustine**

- Academy of Law and Homeland Security
- St. Johns Aerospace Academy



- St. Johns County Academy of Future Teachers

#### St. Johns Technical

- Academy of Coastal and Water Resources
- Academy of Culinary Arts

#### Tocoi Creek

- Academy of Innovation and Build Design
- Academy of Leadership in Emerging Technologies
- Flagler Health+ Academy of Future Healthcare Professionals

For more in-depth information on district Career Academies, visit the website below.

<https://cte.stjohns.k12.fl.us/academies/>

### **AICE and IB- High School Acceleration Academies**

Three high schools have international acceleration programs that are potentially open to students zoned for Bartram Trail, Creekside, and Ponte Vedra High Schools. Students zoned for Allen D. Nease, Pedro Menendez or St. Augustine High Schools are not eligible to apply for the international acceleration programs at schools other than their zoned school. In addition to applying to these programs through the Program of Choice application process, students will have to be deemed academically eligible to be accepted into these programs. A [Teacher Recommendation Form](#) must be submitted by all four core academic teachers.

<a href="#">International Baccalaureate Program (IB)</a>	Allen D. Nease High School
<a href="#">International Baccalaureate Program (IB)</a>	Pedro Menendez High School
<a href="#">Advanced International Certificate of Education (AICE)</a>	St. Augustine High School

*Bartram Trail, Ponte Vedra and Creekside High Schools also have advanced academic programs for students who live within their school zones only. These programs are not open for any students outside their school zones. Please contact your zoned school for more information concerning acceleration opportunities.*

### **JROTC Programs**

Junior Reserve Officers' Training Corps (JROTC) is a program of choice designed to focus on leadership development, problem solving, strategic planning, and professional ethics. The following ROTC programs are available in St. Johns County.

Navy ROTC	Allen D. Nease High School
Air Force ROTC	Bartram Trail High School
Army ROTC	St. Augustine High School

### **St. Johns County School District Collegiate Programs**

#### **Collegiate High School**

Collegiate High School is available to all eligible students on a “space available” basis. There are specific application and eligibility requirements for this program, which is provided in partnership with St. Johns River State College. The program is available in two locations, however accepted students who are zoned for another high school are responsible for transportation. Please read the requirements and visit the St. Johns River State College website for additional information.

Collegiate High School Pedro- <https://www-pmhs.stjohns.k12.fl.us/guidance/>

Collegiate High School Toco- <https://www-tchs.stjohns.k12.fl.us/guidance/>

High School Dual Enrollment pages can be found by following the link below. Each district high school has a Dual Enrollment page that has specific information

<https://www.stjohns.k12.fl.us/guidance/high-school-dual-enrollment-pages/>

Dual Enrollment Opportunities are available at:

- First Coast Technical College  
**Program Contact:**  
Sam Guldswog  
[sam.guldswog@stjohns.k12.fl.us](mailto:sam.guldswog@stjohns.k12.fl.us)
- St. Johns River State College  
**Program Contact:**  
Meghan Deputy  
[MeghanDeputy@stjohns.k12.fl.us](mailto:MeghanDeputy@stjohns.k12.fl.us)

FCTC Dual Enrollment Information, <https://fctc.edu/students/highschool/programs/>

**Career Technical Secondary and Dual Enrollment Programs:**

- Air Conditioning, Refrigeration and Heating Technology
- Landscape & Turf Management
- Nursery Management
- Automotive Service Technology
- Culinary Arts
- Diesel Technologies
- Dental Assisting
- Medical Assisting
- Welding Technologies

**High School Secondary Programs:**

- Agriscience
  - Horticulture Science and Service
- Culinary Arts
- Cosmetology
  - Facials Specialty
  - Nails Specialty
- Early Childhood Education

**Minimum Requirements for Enrollment:**

- Good attendance and discipline record
  - 2.0 unweighted GPA for dual enrollment only
  - On track for graduation
  - Room in the students schedule for a minimum of two consecutive periods. Also please be advised some courses may require additional periods.
- 

**Application Process:****Dual Enrollment**

- Complete and return the [Dual Enrollment Application 2021-22](#) to the FCTC Dual Enrollment Advisor. These documents are also available with your High School Guidance Counselors.
- If you are applying for dual enrollment Medical or Dental Assisting, click here for the additional [Health Careers Dual Enrollment Application 2021-22.](#)

**High School Secondary**

- Complete [High School Secondary Application 2021-22](#)

Completed applications must be submitted by:

**Summer/Fall 2021-22** Application due to **FCTC** by March 15th

**Spring 2021- 22** Applications due to **FCTC** by October 29th

\*Please note that classes may be limited in the spring

## **St. Johns County School District Transition Programs- Life Work, Project Search, and St. Johns Community Campus**



### **LIFE WORK TRANSITION PROGRAM**

#### **St. Johns County School District**

---

##### **Our Mission Statement**

Dedicated to transitioning young adults with disabilities into successful employment through individualized vocational opportunities, student centered planning, and community involvement.

##### **Staff**

Teacher – Adam Ringwood	(904) 547-3433	<a href="mailto:adam.ringwood@stjohns.k12.fl.us">adam.ringwood@stjohns.k12.fl.us</a>
Teacher – Tracy Holland	(904)547-3433	<a href="mailto:tracy.holland@stjohns.k12.fl.us">tracy.holland@stjohns.k12.fl.us</a>
Employment Specialist/Job Coach – Ami Brennan	(904) 547-3433	<a href="mailto:Ann-Marie.Brennan@stjohns.k12.fl.us">Ann-Marie.Brennan@stjohns.k12.fl.us</a>
Employment Specialist/Job Coach – Anthony Major	(904) 547-3433	<a href="mailto:Anthony.Major@stjohns.k12.fl.us">Anthony.Major@stjohns.k12.fl.us</a>
Employment Specialist/Job Coach – Brandi Gilbert	(904)547-3433	<a href="mailto:Brandi.Gilbert@stjohns.k12.fl.us">Brandi.Gilbert@stjohns.k12.fl.us</a>
Employment Specialist/Job Coach – Tracy Munoz	(904)547-3433	<a href="mailto:Tracy.Munoz@stjohns.k12.fl.us">Tracy.Munoz@stjohns.k12.fl.us</a>
Employment Specialist/Job Coach – Marty Thacker	(904)547-3433	<a href="mailto:marty.thacker@stjohns.k12.fl.us">marty.thacker@stjohns.k12.fl.us</a>

##### **About Our Program**

The Life Work Transition Program is an outcome driven postsecondary option designed for 18-22 year old students with disabilities in The St. Johns County School District. These students have met all graduation requirements and have deferred receipt of their diploma to develop the skills required for successful employment, social skills, and independent living. Our focus is to provide students the opportunity to explore employment through a variety of nonpaid work experiences in our community while combining classroom learning. Staff assist students in realizing and setting individual goals, needs, and specific skillsets in order to help prepare them for Vocational Rehabilitation Adult Services once deferment has ended.

Life Work students also have the opportunity to participate in Dual Enrollment classes at First Coast Technical College, pending application process and acceptance. Dual Enrollment programs include:

- Air Conditioning, Refrigeration and Heating Technology
- Landscape & Turf Management
- Nursery Management
- Automotive Service Technology
- Culinary Arts
- Diesel Technologies
- Dental Assisting
- Medical Assisting
- Welding Technologies
- Agriscience- Horticulture Science and Service
- Culinary Arts
- Cosmetology- Facials Specialty and Nails Specialty
- Early Childhood Education

## Services Provided

The Life Work Transition Program provides a variety of customized services for students, including, but not limited to:

- Functional Academic instruction
- Academic support in Dual Enrollment courses
- Job coaching
- Job placement and retention
- Instruction in self-determination, self-advocacy, and daily living skills
- Work-Based Learning Experiences
- Travel training
- Community participation and access

## Current and Previous Business Partners

The Conch House	Caddy Shack Restaurant	St. Johns County Sheriff's Office
Flagler Hospital	The American Legion	Burger Buckets
Council on Aging	Borrillos Pizza and Subs	Wards Creek Elementary
Casa Monica Hotel	The United Way	St. Augustine High School
Publix	The St. Augustine Light House and Maritime Museum	Sebastian Middle School
Bealls Outlet		

---

For more information about Life Work, please contact Leigh Ann Hale, Program Administrator:  
[Leighann.hale@stjohns.k12.fl.us](mailto:Leighann.hale@stjohns.k12.fl.us)  
904-547-7712



St. Johns County School District, Excellence in Public Education since 1869

### How can a SJCS D student be eligible for Project SEARCH?

The following must be recognized and/or completed in order for a student to be considered, eligible, for Project SEARCH.

- The student must have a disability, graduated, and defer the receipt of their standard diploma in order to continue receiving services through SJCS D.
- The student must apply and be approved as a consumer of Vocational Rehabilitation.
- The student must apply to Project SEARCH through an application process provided by the program's Instructor. (Spring 2021)
- The student must undergo a Skills Assessment Day, located on site, to assess the student's level of vocational skills. (Spring 2021)
- If accepted, the student must commit to a one time, unpaid, 10-month internship program at The Renaissance World Golf Village Resort.
- The student must not have any prior commitments (job, financial obligations, future moves out of district, etc.) that could interfere with Project SEARCH.
- The student's final goal at the end of their internships must be employment.

## What is Project SEARCH?

Project SEARCH was developed at Cincinnati Children's Hospital Medical Center, a research environment that fosters visionary thinking and innovation. It began in 1996, when Erin Riehle was Director of Cincinnati Children's Emergency Department. Erin felt that, because the hospital served individuals with developmental disabilities as patients, it made sense that they should commit to hiring people in this group. She wondered if it would be possible to train people with developmental disabilities to fill some of the high-turnover, entry-level positions in her department. These jobs involved complex and systematic tasks, such as stocking supply cabinets. To learn more about the feasibility of her idea, she turned to Great Oaks Career Campuses and the Hamilton County Board of Developmental Disability Services. Through this outreach, Erin met Susie Rutkowski, then the special education director at Great Oaks. Erin and Susie formed a partnership that was instantaneous, and together they turned the idea of filling a handful of jobs in Cincinnati Children's Emergency Department into a comprehensive, internationally recognized program model – Project SEARCH.

### Contact Information

Byron Pennington, Program Instructor  
Email: Byron.Pennington@stjohns.k12.fl.us  
Office: (904) 571-7569



Project SEARCH  
Renaissance WGV Resort  
500 South Legacy Trail  
St. Augustine, FL 32092



# Project SEARCH Renaissance WGV

The Renaissance World Golf  
Village Resort Saint Augustine





## Successful Employment Outcomes

### Awards and Job Placement Recognition

Job placement and successful long-term employment is based on the Intern's ability to learn and grow during their internships. Although job placement is not guaranteed, The Renaissance WGV Resort's Project SEARCH, has been awarded and recognized each year that they have been in operation for their high level of employment outcomes. In addition, The Renaissance has been recognized and awarded, by the state of Florida, for their commitment in employing individuals with disabilities.

### Hear for yourselves what Project SEARCH is all about!

*"Project SEARCH helped prepare me for the workforce and helped me get a job too. I felt more confident and ready for the real-world after my internships at The Renaissance."*

— Intern Graduate

---

*The Renaissance and Project SEARCH have set the standard for what it means to have successful vocational training and long-term, competitive paid employment.*

---

### Additional Benefits and Outcomes

- Post-Secondary Training and Internship Experience at no cost.
- Opportunity to work in a high-status organization and receive training under Marriot and Atrium Hospitality.
- Professional Resume with References and LORs from Atrium and Marriot.
- Official Project SEARCH Certification
- Travel Training and more.



This is The Renaissance World Golf Village Resort's fourth year in operation with Project SEARCH.

### Internships and Workplace Readiness Curriculum Training.

Over the past several years, The Renaissance has supported the growth and development of our young adults with disabilities. There are currently over 20 different internships through 5 separate departments at The Renaissance. Internships and Vocational Training range from Front Desk Clerk, Resort Shop Barista, Room Attendant, Maintenance/Engineering, Host/Hostess, Servers, Line Cooks, Banquet and many more.

In addition to the on-site job coaching and vocational training, Project SEARCH also provides intensive, Workplace-Readiness Curriculum Training, for its interns. The curriculum, which is taught on site, focuses on Self-Advocacy, Professional Communication in the Workplace, Health and Wellness, Managing Stress and Emotions, Interview Preparation, Financial Literacy, Team Building, Technology, Workplace Safety and more.

## A PRACTICAL EDUCATION

- Financial Planning and Money Management
- Functional Academics and Technology
- Self-Determination
- Building Relationships
- Communications
- Travel and Mobility
- Community Living
- Home Living
- Health and Safety
- Employable Skills



*The Community  
is Our Campus*

**St. Johns Community Campus**  
A Charter School of the St. Johns County School District  
62 Curra Street | St. Augustine, Florida 32084  
Enrollment Contact: LYNNE FUNCHEDON, Program Director  
904-824-7249 ext 131 (phone) | lfunchedon@arcsj.org (email)



Special thanks to photographer Scott Smith for capturing all the wonderful images in this brochure.

## St. Johns Community Campus

A Unique Educational Experience for Young Adults



## Achieve with us.

The St. Johns Community Campus is a charter school of the St. Johns County School District, and an affiliate program of The Arc of the St. Johns



## COMPELLING VALUE - MEASURABLE OUTCOMES

A typical student will graduate from high school at the age of 18. The average student with IDD or other qualifying ESE measures, may complete public high school at the age of 21. The Community Campus provides a vocationally focused opportunity for students to prepare for gainful employment and practical life skills upon graduation.



- Reintroduce to peers of similar ages and interests
- Community involvement through work, social interests, civic responsibilities, clubs, organizations, and hobbies
- Living in the least restrictive residential setting upon graduation
- Having established non paid supports
- Graduating into an employment field in the students area of interest
- Successfully supporting hundreds of individuals in employment since 1991

### Community Training Partners:

- Education
- Community Service
- Building, home & garden
- Retail
- Food Service
- More



*"This was the perfect  
option for me."*

**Achieve with us.**

## GUIDING PRINCIPLES

The Community Campus is designed to mimic a 4 year extended educational track. Our belief is that every person can make informed choices with positive exposure to interesting experiences. The unique learning styles of the students are taken into consideration in all lessons. The student's personal goals become the focus of every step in the process.

## INSPIRING CURRICULUM

### Experiment

Introduced to new activities, ideas and experiences, students discover interests, likes and talents.

### Empower

Students begin to define their individual areas of focus and develop realistic plans to expand them.

### Envision

A detailed Vocational, Social and Residential profile is developed and the students work on defining and organizing opportunities.

### Engage

The students begin to follow the plan they develop and may be actively job seeking, searching for apartments, becoming involved in various clubs and organizations, and actively involved in the community.



*"This is almost  
like a community  
college only  
better."*



**Agency Information**

Florida Center for Students with Unique Abilities, Vocational Rehabilitation, Agency for Persons with Disabilities, Florida Center for Independent Living, and the Division of Blind Services all listed below.

## Florida Center for Students with Unique Abilities, <https://fcsua.org/>

The purpose of the Florida Center for Students with Unique Abilities is to provide support to students, families, and institutions of higher education so that students with intellectual disabilities have opportunities for on-campus college experiences that lead to employment opportunities.

(407)823-5225

fcsua@ucf.edu

University of Central Florida - Teaching Academy

4000 Central Florida Blvd.

P.O. Box 161250

Orlando, FL 32816-1250



### Florida's Inclusive Postsecondary Education Programs

Programs listed here meet the definition of *inclusive postsecondary education for students with intellectual disabilities (ID)*, as defined in the TPSID initiative of the Higher Education Opportunity Act (HEOA, 2008). These programs continue to evolve, refer to [www.FCIHE.com](http://www.FCIHE.com) or [www.FCSUA.org](http://www.FCSUA.org) for updated information. The HEOA represents a federal initiative which specifically defines *inclusive postsecondary education* as programs where students with ID enroll in college courses with their degree-seeking peers and experience internships and gainful employment. (FCIHE, 2016).

Institution & Affiliation: Program Name	Location	Contact Information	Certifications	Age	Length	Housing
Broward College: Seahawk NEST	Fort Lauderdale	Craig Levins, clevins@broward.edu	FPCTP	18-22	1 Yr.	No
College of the Florida Keys: Project Access	Key West	Katie Norland, Katie.Norland@fkcc.edu	CTP/FPCTP	18+	1-3 Yrs.	Yes
Florida Atlantic University: Academy for Community Inclusion	Jupiter & Boca Raton	Dr. Michael Brady, mbrady@fau.edu	CTP/FPCTP	18+	3 Yrs.	No
Fort Meyers & Cape Coral Technical Colleges: HIRE	Fort Meyers/Cape Coral	Jenn Robinson, JennAR@Leonschools.net	FPCTP			No
Florida Gulf Coast University: Soaring Eagle Academy	Fort Meyers	Doug Carothers, dcarothe@fgcu.edu	FPCTP			No
Florida International University: FIU Embrace Education	Miami	Nicole Attong, nattong@fiu.edu	FPCTP	18-26	2 Yrs.	Yes
Florida Panhandle Technical College: Project Independence	Chipley	Dr. Martha Compton, Martha.compton@fptc.edu	CTP	18+	1-2 Yrs.	No
Florida State College Jacksonville: Achieve/ VERTICAL Program	Jacksonville	Ethel Still-Richardson, stillrichardson@fscj.edu	---	18+	1-2 Yrs.	No
Indian River State College: STAGE Program	Ft. Pierce	Marria Partee, mpartee@irsc.edu	CTP/FPCTP	18+	2 Yrs.	No
Lively Technical College: The SOAR Program	Tallahassee	Shelly Bell, Bells@leonschools.net	FPCTP			Yes
McFatter Technical College: Grow Your Future	Davie	Christy Bradford, christy.bradford@browardschools.com	CTP/FPCTP	18+	1-2 Yrs.	No
Orange Technical College: Build your Future	Winter Garden	Kathy Lepow, kathleen.lepow@ocps.net	FPCTP	18+	1 Yr.	No
Pensacola State College & Arc Gateway: PALS	Pensacola	Dondie Roper droper@arc-gateway.org	---	18+	2 Yrs. +	No
Robert Morgan Tech. College & Miami Dade Schools: TOPS	Miami	Dr. Vivian Vieta, vvieta@dadeschools.net	CTP/FPCTP	18+	3-4 Yrs.	No
Santa Fe College: Project SAINT	Gainesville	Linda.Mussillo@sfcollge.edu	CTP/FPCTP	18-25	1-2 Yrs.	No
Sheridan Technical College: Build Your Future	Hollywood	Christy Bradford, christy.bradford@browardschools.com	FPCTP			No
Southeastern University: SEU Link	Lakeland	Kelly Southmayd, kssouthmayd@seu.edu	CTP/FPCTP	18+	2+ Yrs.	Yes
St. Petersburg College: Titans Up	St. Petersburg	April Ross, ross.april@spcollege.edu	CTP/FPCTP	18+	1 Yr.	No
Tallahassee Community College: Eagle Connections	Tallahassee	Amanda Warren, warrena@tcc.fl.edu	CTP/FPCTP	18+	2-3 Yrs.	No
University of Central Florida: Inclusive Education Services	Orlando	Dr. Adam Meyer, Adam.meyer@ucf.edu	CTP/FPCTP	18+	2.5 Yrs.	Yes
University of North Florida/Arc: On Campus Transition	Jacksonville	Leigh Belmont, lbelmont@arcjacksonville.org	---	18+	2/4 Yrs.	Yes
University of South Florida - coming January 2020	St. Petersburg	L. Danielle Roberts-Dahm, lroberts@usf.edu	FPCTP			Yes

Visit us at [www.FCIHE.com](http://www.FCIHE.com) to learn more and find resources and links to each of Florida's Inclusive Postsecondary Education Programs.

Updated 9.24.20

**Florida Center for Independent Living, <https://www.ciljacksonville.org/>**

**Monday-Friday, 8am-5pm**

**2709 Art Museum Drive**

**Jacksonville, FL 32207**

**(904) 339-8484**

CIL Jacksonville is a Center for Independent Living. Since 1978, CIL Jacksonville has empowered people with disabilities to live independent, self-empowered lives. Each person who walks into our office, receives the services they need to set and achieve their goals for independence. We believe in a life of self-determination, self-empowerment and equal access. Services include:

- Advocacy
- Deaf Help Program
- Free Amplified Telephones
- Medical Equipment Loans
- Sign Language Interpretation
- Career Focused Mentoring
- Community Education
- Disability Ambassador Program
- Youth Advisory Council
- SSI/SSDI Benefits Assistance
- Employer Assistance
- Employment Services
- Lunch Break Program

**The Division of Vocational Rehabilitation, <http://rehabworks.org/>**

VR is a federal-state program that helps people who have physical or mental disabilities get or keep a job. VR is committed to helping people with disabilities find meaningful careers.

Our **Mission** is to help people with disabilities find and maintain employment and enhance their independence. Our **Vision** is to become the first-place people with disabilities turn when seeking employment and a top resource for employers in need of qualified employees.

All students with a documented disability in the St. Johns County School District, ages 14 and up, are able to be referred for VR Pre-ETS services. The application is below. Please submit all applications to Leigh Ann Hale, [Leighann.hale@stjohns.k12.fl.us](mailto:Leighann.hale@stjohns.k12.fl.us) for entry into the VR portal.

**Types of VR Assistance**

**While in high school:**

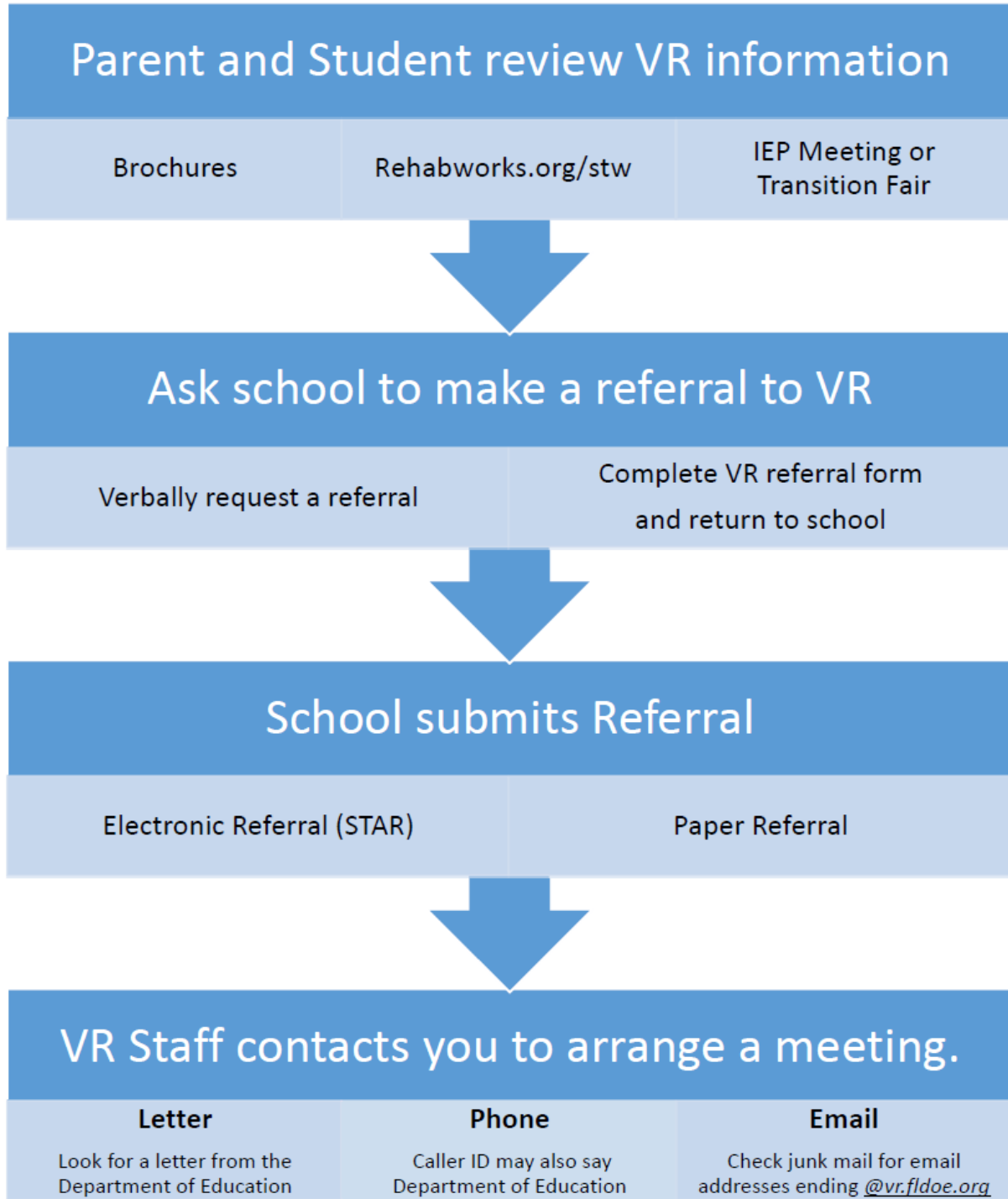
- Medical & Psychological Assessment
- Vocational Evaluation & Planning
- Career Counseling & Guidance
- Work Readiness Training
- Work Experiences

**After exiting high school:**

- Workplace Accommodations
- Job Placement
- Job Coaching
- On-the-Job Training
- Supported Employment
- Assistive Technology & Devices
- Time-Limited Medical and/or Psychological Treatment
- Postsecondary Education/Training

# Vocational Rehabilitation (VR) Referral Process:

## *"How does this all work?"*



# Pre-Employment Transition Services



Vocational Rehabilitation  
helps individuals with  
physical or mental disabilities  
find, get or keep a better job

**The Florida Department of Education, Division of Vocational Rehabilitation (VR) works together with students, families, schools and community agencies and organizations to provide services that promote successful transitions from school to work and into adult life.**

## **What is Pre-Employment Transition Services?**

Pre-Employment Transition Services (Pre-ETS) offer students with disabilities an early start at career exploration and preparation for adult life.

Beginning at age 14, students with disabilities can connect with VR for Pre-ETS. VR works with students, their families, their schools and community partners to enrich transition planning and support students with gaining knowledge and experiences necessary so they may make informed decisions about their future.

Under the Workforce Innovation and Opportunities Act (WIOA), every student (ages 14-21) with a disability has the opportunity to participate in Pre-Employment Transition Services (Pre-ETS). This includes:

- Job-exploration counseling
- Work readiness training
- Work-based learning experience
- Postsecondary educational counseling, and
- Self-advocacy training and peer mentoring

Students with disabilities may participate in Pre-ETS without having to apply to VR or be determined eligible for services. The focus is to develop work skills, practice social skills and acquire a network of community supports while the student is still in high school.

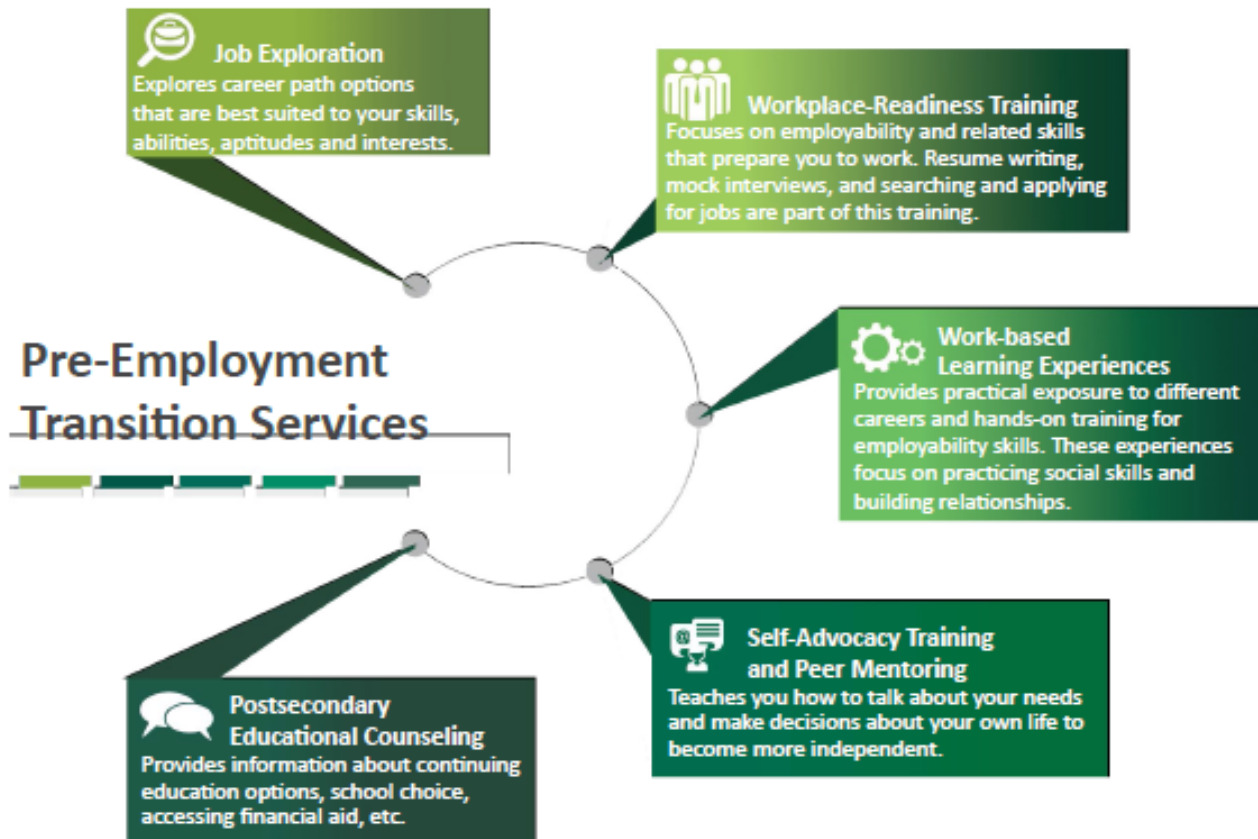


## Who Can Participate in Pre-Employment Transition Services?

Students with disabilities ages 14-21 who are currently enrolled in school.

## What are the Pre-Employment Transition Services?

Pre-ETS include job exploration, workplace-readiness training, work-based learning experiences, training on self-advocacy (e.g., youth peer mentoring) and postsecondary educational counseling.



## How Does a Student Access Pre-Employment Transition Services?

Students can contact a VR office or request a referral from their school.

## Contact Vocational Rehabilitation



850-245-3399  
800-451-4327



VRTransitionYouth@  
vr.fldoe.org



[www.RehabWorks.org](http://www.RehabWorks.org)



Division of Vocational Rehabilitation  
Transition Youth Services  
4070 Esplanade Way, 2nd Floor  
Tallahassee, FL 32399-7016

The Florida Department of Education, Division of Vocational Rehabilitation (VR) is an equal opportunity employer. It is against the law for VR as a recipient of Federal financial assistance to discriminate against any individual in the United States on the basis of race, color, religion, sex, national origin, age, disability, political affiliation or belief. The application process used by VR to determine eligibility for services, any subsequent services and the entire VR process are subject to these non-discrimination requirements. Auxiliary aids and services are available upon request to individuals with disabilities. VR program receives 78.7 percent of its funding through a grant from the U.S. Department of Education. For the 2019 Federal fiscal year, the total amount of grant funds awarded were \$161,156,579. The remaining 21.3 percent of the costs (\$43,616,711) were funded by Florida State Appropriations. Revised October 2019.





# Pre-ETS Referral Form – (District)

\*Required Fields

## Student Information

\*Name: \_\_\_\_\_ SS#: \_\_\_\_\_

\*Date of Birth: \_\_\_\_\_ Gender: \_\_\_\_\_ Disability Documentation: \_\_\_\_\_

Race: \_\_\_\_\_ Ethnicity: \_\_\_\_\_

\*Home address: \_\_\_\_\_

\*City: \_\_\_\_\_ \*Zip Code: \_\_\_\_\_ \*County: \_\_\_\_\_

\*Phone Number: \_\_\_\_\_ Email: \_\_\_\_\_

\*Name of School: \_\_\_\_\_

Parent/Guardian Information (if applicable) Name: \_\_\_\_\_

Home Phone, if different from student: \_\_\_\_\_ Cell: \_\_\_\_\_

Email: \_\_\_\_\_

## \*School Staff Making Referral

Name: \_\_\_\_\_ Position: \_\_\_\_\_

Email: \_\_\_\_\_ Phone: \_\_\_\_\_

## Accommodations for initial meeting with VR Staff:

Do you require an American Sign Language interpreter? ☐ Yes

Do you require an assistive listening device? ☐ Yes

Do you require translated documents? ☐ Yes

Do you require a foreign language interpreter? ☐ Yes

Do you require any other accommodation for your impairment? ☐ Yes

If yes, please explain: \_\_\_\_\_

## \*Transition Youth Services Requested (Check all that apply)

☐ Job Exploration Counseling (includes discussions on the student's vocational interests, the labor market, and identification of career pathways)

☐ Work Readiness Training (A 20 hour course that focuses on employability and work readiness skills)

☐ Self-Advocacy Training (A course that teaches students how to speak up for themselves and make decisions about their own lives)

☐ Postsecondary Educational Counseling (provides an awareness of post-secondary career pathway options with job and career information) \* Service is not currently available

☐ Work-Based Learning Experiences (includes hands on training for employability skills; may be paid or non-paid)



## Student Acknowledgement

I understand that through Vocational Rehabilitation, I will be offered limited Pre-Employment Transition Services that can help me explore, prepare for, and make informed career-based decisions. I understand that I must be an active participant in the services I choose to achieve my transition goals.

\_\_\_\_\_  
Signature of Student

\_\_\_\_\_  
Date

## Permission to Make Referral

By Signing this Pre-ETS Referral, I give \_\_\_\_\_ County Schools permission to submit this STAR Referral to VR. I understand I will be contacted by VR Staff to set up an initial meeting and acknowledge that my participation is required if my child is under 18 or if I am his/her Guardian.

Parent/Guardian/Age of Majority Student: \_\_\_\_\_

\_\_\_\_\_  
Signature

\_\_\_\_\_  
Date

## Confirmation Statement

By Signing this Pre-ETS Referral, I confirm that the student has been identified by \_\_\_\_\_ County Schools as a student with a disability.

School Staff: \_\_\_\_\_

\_\_\_\_\_  
Printed Name

\_\_\_\_\_  
Position

\_\_\_\_\_  
Signature

\_\_\_\_\_  
Date

Name of SDR submitting the Pre-ETS Referral to VR: \_\_\_\_\_

Phone # of SDR submitting the referral to VR (if different): \_\_\_\_\_

For Official VR Use Only (to be completed by VR Staff)

VR Staff Name: \_\_\_\_\_ Area/Unit \_\_\_\_\_

Date referral received from SDR: \_\_\_\_\_

Date entered into RIMS: \_\_\_\_\_

## **The Agency for Persons with Disabilities**

<https://apd.myflorida.com/region/northeast/>

### **Agency Mission**

The Agency Supports Persons with Developmental Disabilities in Living, Learning, and Working in their Communities.

### **Agency Goals**

1. Increase access to community-based services, treatment, and residential options.
2. Increase the number of individuals with developmental disabilities in the workforce.
3. Improve management of the agency and oversight of providers.

In order to be eligible for services from the Agency for Persons with Disabilities (“APD”), an individual must have a developmental disability (as defined in section 393.063(12), Florida Statutes), which occurs prior to age 18 and constitutes a substantial handicap that can reasonably be expected to continue indefinitely. Disabilities served by APD include:

- People severely impaired by autism
- Cerebral palsy
- Spina bifida
- Intellectual disabilities
- Down syndrome
- Prader-Willi syndrome
- Phelan-McDermid syndrome
- Children age 3-5 who are at a high risk of a developmental disability

Services include:

- Adult Dental
- Behavior Analysis
- Behavior Assistant
- Life Skills Development 1-Companion
- [Life Skills Development 2 – Supported Employment](#)
- Life Skills Development 3 – Adult Day Training
- Therapies: Dietician, Occupational, Speech, Physical, Respiratory, Specialized Mental Health Counseling
- Environmental Accessibility Adaptations
- Durable Medical Equipment
- Consumable Medical Supplies
- Personal Supports
- [Supported Living Coaching](#)
- Support Coordination
- [Transportation](#)
- Nursing
- Residential Habilitation
- Respite
- Special Medical Home Care
- In-Home Subsidies

- Family Care
- Recreation
- Assessments and Medical Evaluations
- Support Planning
- Psychological Evaluations
- Competency Training
- Personal Emergency Response Systems

#### APD Northeast Region Office

3631 Hodges Boulevard  
Jacksonville, FL 32224  
Phone: 904-992-2433  
Fax: 904-992-2442

#### **Daytona Beach Field Office**

Phone: 386-238-4607  
Fax: 386-238-4753

#### **Gainesville Field Office**

Phone: 352-955-6061  
Fax: 352-955-5787

#### **Apply for Services in the Northeast Region**

Contact: Jennifer Fennell

Agency for Persons with Disabilities  
1621 NE Waldo Road, Building 1  
Gainesville, Florida 32609  
Phone: (352) 955-6199  
Fax: (352) 955-5787  
[Jennifer.fennell@apdcares.org](mailto:Jennifer.fennell@apdcares.org)

If you reach the voicemail service, please leave a message with your name & number. Calls are returned in the order they are received.

## **The Division of Blind Services**

The Florida Division of Blind Services helps blind and visually impaired individuals achieve their goals and live their lives with as much independence and self-direction as possible.

Programs include:

- Blind Babies Program
- Children's Program
- Transition Services
- Independent Living Program
- Vocational Rehabilitation Program
- Employer Services
- Business Enterprise Program
- Rehabilitation Center for the Blind and Visually Impaired
- Braille and Talking Library Books

<http://dbs.myflorida.com/>

### **Contact Information**

*1809 Art Museum Drive, Suite 201*

*Jacksonville, FL 32207*

Main Number: (904) 348-2730

Toll Free: (800) 226-6356

Fax: (904) 348-2737

District Administrator: [Daniel O'Connor](#), [Daniel.O'Connor@dbs.fldoe.org](mailto:Daniel.O'Connor@dbs.fldoe.org)

Serves: Baker; Clay; Duval; Nassau; and St. John Counties.

Online Application for Services- <https://aware.dbs.fldoe.org/ApplyForServices>

PDF Application for Services- [http://dbs.myflorida.com/Information/Apply/CS-001%20Application%20for%20Services%20\(English\).pdf](http://dbs.myflorida.com/Information/Apply/CS-001%20Application%20for%20Services%20(English).pdf)