



# Kindergarten Information

## 2023-2024





# Welcome


ABC's & 1-2-3's  
of  
*Kindergarten*



# MCA

## Mission Statement

Mill Creek Academy will  
inspire students to  
become lifelong learners  
with integrity.



# MCA

## Vision Statement

The learning community of  
Mill Creek will ensure that

all achieve their fullest  
potential through

challenging, purposeful

learning opportunities where

lifelong learning becomes a passion.

# MEET YOUR TEAM –

*we are here to serve our families*

- Ken Goodwin, **Principal**
- Jill Loughran, Jacque Ottosen, David Barnes, & Lisa Sclafani, **Assistant Principal**
- Diana Ambrose, Kaitlyn Jordan, Amy DiDomenico, & Rick Seifert **Guidance Counselor**
- Tracy Gordon, Carla Wiercigroch, **Receptionist**
- Tara Tacinelli, **Confidential Secretary/Bookkeeper**
- Sondra Hisrich, **Bookkeeper**
- Jessica Veon & Kim Forsythe, **Data Entry Operator**
- Arthur Thomas, **Extended Day Coordinator**
- Charlene Carroll & Rebecca Dery, **Nurse**



# A is for...Assurance

*Rest Assured that safety is our priority & the well-being of our Kindergarten students is the very most important thing to us!*



# A is for...Attendance

- Ensure your child arrives at school on time daily beginning at 8:25 am. Instruction begins promptly at **8:25 am**.
- **Parents should provide the MCA Absentee form when a student has returned to school, via written or electronic.** This can be found on the MCA website



# B is for...Birthdays

We love to celebrate student birthdays, celebration treats must be store bought with list of ingredients identified. Please know we are a nut allergy aware school.

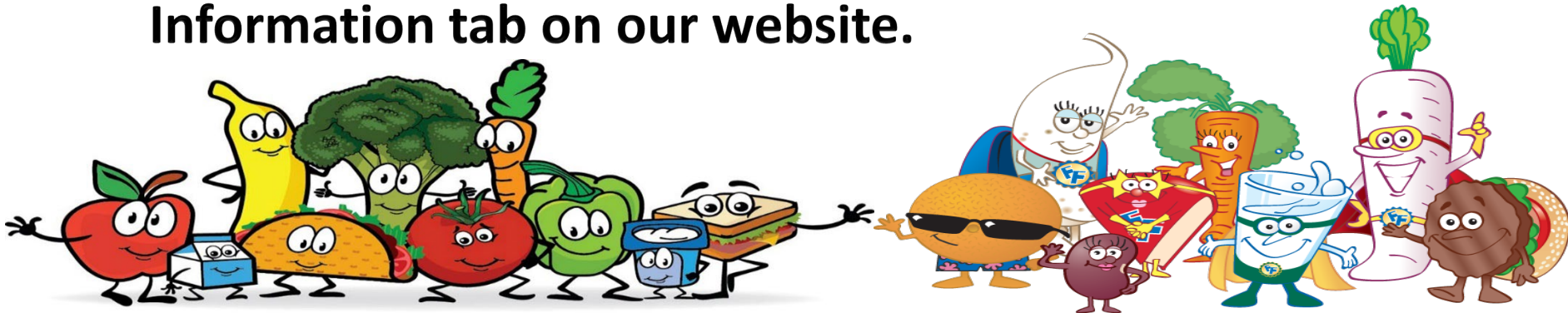




# C is for...CAFÉ

## CAFÉ Leader - Ms. Caroline Russ

- Each student has an ID used to purchase their café items.
- Teachers and staff are on hand to assist students in the café.
- Kindergarteners can also bring a healthy snack to have in the afternoon hours.
- Menus are available online.
- PayPams is the online system St Johns County schools use. You can deposit money and view purchased items on their website.
- Visit the Mustang Café's webpage under the Parent Information tab on our website.



# Please consider...

- Items in lunchbox should be easy for students to open without support
- Begin practicing with students now if they will be bringing a lunch from home
- We will make sure every student has the support they need

**Dear Parents**  
(of elementary school aged kids)

When your kids come to school we will have to help them open LOTS of the things you pack for lunch.

**PLEASE HAVE THEM PRACTICE OPENING THINGS BY THEMSELVES.**

These are EASIER to open. If I help them open it, I won't be putting my hands on parts that will go in their mouth.



flip top water bottles      bento box/or tupperware      ziplock bags      reusable sandwich bags      twist off snacks

These are HARDER to open. If you send these PLEASE have them PRACTICE opening it. If I help them open it, I will be putting my hands on parts that will go in their mouth.



milk carton      juice box w/straw to put in it.      lunchables have MANY packages to open inside of it.      individual chips/snacks      twist off drinks

If your kiddo can open everything in their lunch, it means less time waiting with their hand up, more time eating and less germs!! (even though we are washing our hands and disinfecting)

# D is for...Dismissal

## Dismissal Routines -

- Bus Riders/Extended Day - Released First
- PPU/Walkers/DayCare Vans - Released at 2:45 - after buses have been released
- Reminder - all students have bus access or are assigned as walkers.
- Please be patient if choosing PPU as a dismissal option



# D is for...Dismissal

## Important Dismissal Reminders

Critical Reminders - With increased traffic and safety updates, it is important that we work together to ensure the safety of our students.

- We ask that parents/families remain in their vehicles at **ALL TIMES** during dismissal.
- Parents/Families **SHOULD NOT** be on sidewalks during dismissal; this impedes the safety of our students (2:45 M,T,R,F)
- **Early Release Wednesday** – All students are dismissed at 1:45 on Wednesday.
- Please make arrangements for your child to be picked up at this time.

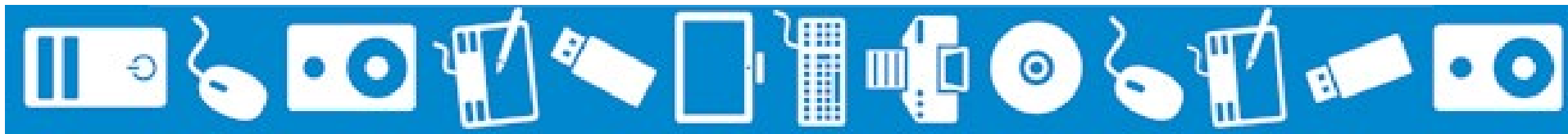






# E is for...Email & communication

- Teacher's Email
- Teacher Newsletters
- Mill Creek Webpage
- Parent Handbook – located on MCA webpage under Parent Tab. Updated version coming soon
- Office Information – all office material will go on home on Thursday
- Monthly Newsletter - monthly newsletter will include learning updates and student celebrations
- Peachjar - located on MCA webpage - communication of community activities(beginning in fall)
- School Messenger – school-wide email, phone, text messaging system (please do not block us – this is our main form of communicating with families with timely information)







# G is for...

## *Guaranteed and viable curriculum & learning*

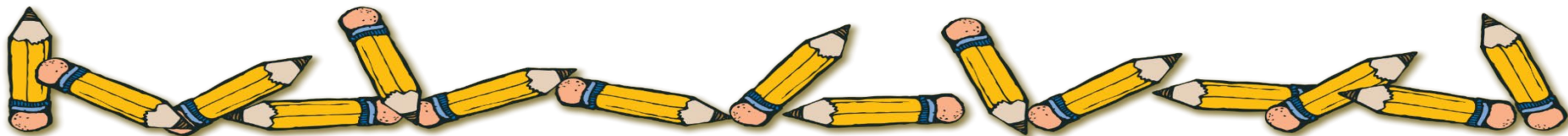
**Common Instructional Language** – MCA believes in  
“Learning for ALL”

**Where ALL students CAN and WILL learn!**

**Guaranteed and Viable Curriculum** – Teachers develop common formative assessments that identify the level of rigor and instructional timelines for all students within a grade level and work collaboratively to ensure fidelity in high yield instructional strategies.

**Universal Reteach** – A universal re-teaching time where all learners are given additional time for re-teaching or enrichment. We use a preventative model, not a “wait until they fail” model

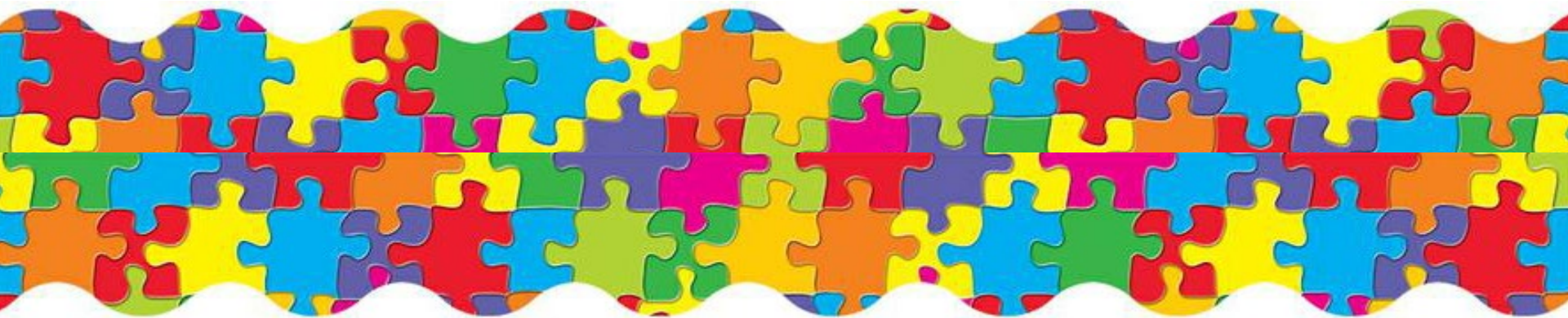
**Inquiry-based Learning** - an inquiry-based learning environment where learners are given the ownership of their learning and teachers facilitate through guided questions, accountable talk, and strategies that teach students to be rigorous problem solvers.





# H is for...Handbook

The MCA Handbook can be accessed on our homepage. Please make sure to review prior to the beginning of the school year.



# I is for...Independence

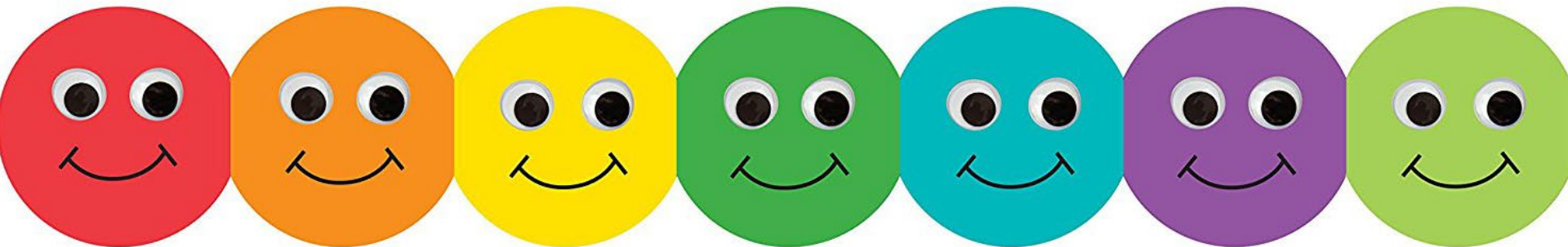
- Parents can only walk their kindergarten student to class on their staggered start date.
- Staff members will be assigned specifically to our Kinder students and will meet the students and their parents on their staggered start morning.
- Staff members will be available to walk students in the first week of school.
- **THEN...** we believe our students will be ready to **be an independent “schooler.”**  
**BUT....** We won't be far behind!





# J is for...Joy

Our kindergarten classes are filled with joy, laughter, kindness, & compassion.



# K is for...Keep Updated

A great resource to stay updated is the

Mill Creek Academy

website: <https://www-mca.stjohns.k12.fl.us/>

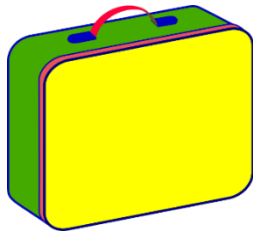




# L is for...Label

Please label all supplies on your Kindergarten Supply list with your child's first and last name.

In addition, please label jackets and lunch boxes.





# M is for... Mustang Messenger

The Mustang Messenger is the  
weekly school newsletter.





# N is for...Nurse

- Mill Creek Academy has 2 full time nurses in the Clinic.
- Mrs. Charlene Carroll and Mrs. Rebecca Dery are excellent at taking care of our students.





O is for...Outstanding!

The Mill Creek Academy  
community is outstanding!!





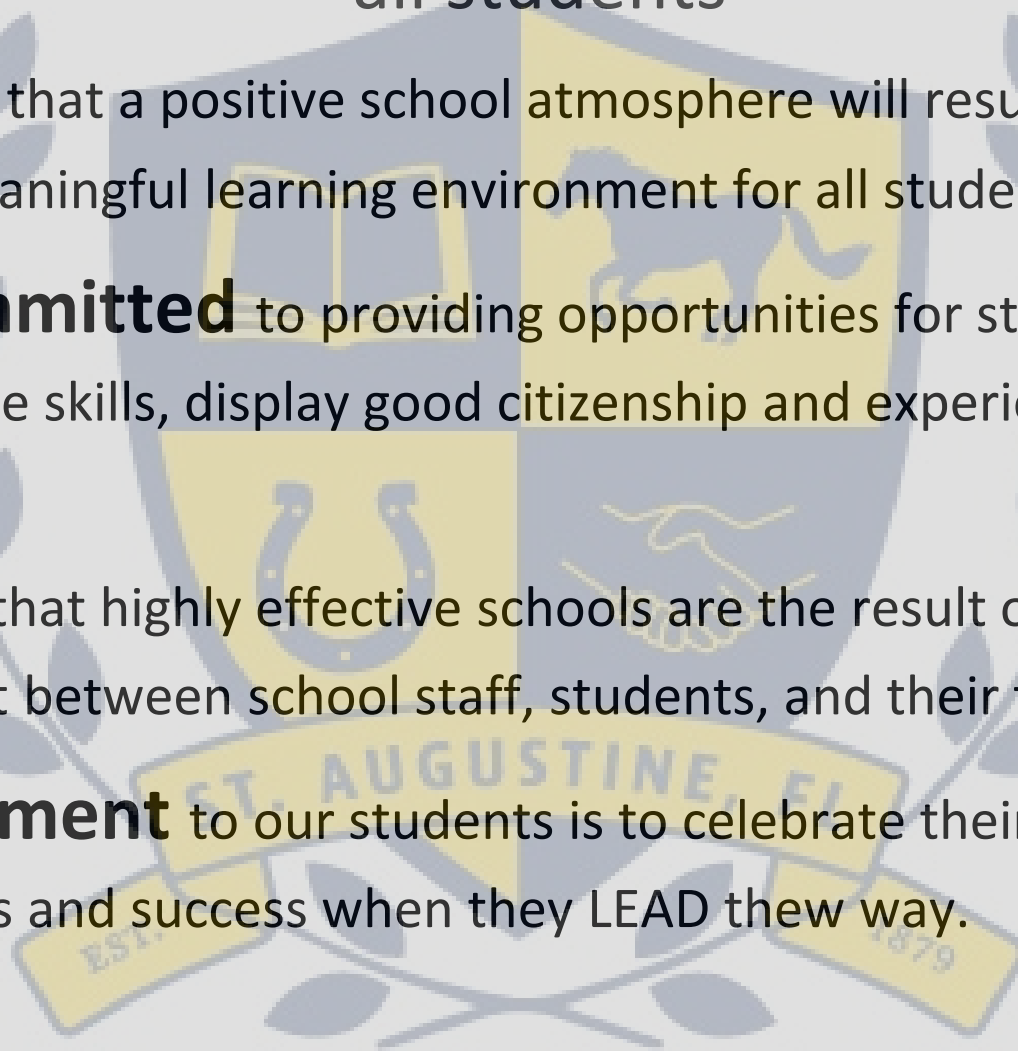
**P** is for...**Positive Behavior Support** -  
providing a positive, support learning environment for  
all students

**We believe** that a positive school atmosphere will result in a more effective and meaningful learning environment for all students.

**We are committed** to providing opportunities for students to learn concepts, practice skills, display good citizenship and experience academic success.

**We believe** that highly effective schools are the result of the teamwork and commitment between school staff, students, and their families.

**Our commitment** to our students is to celebrate their accomplishments and success when they LEAD the way.







# P is for...PTA

- Our wonderful PTA- continues to support both the educational needs of students, staff and facility enhancements when needed.
- Visit the MCA PTA webpage link on our homepage.
- Information on joining, buying spirit wear, and all the fun, family activities that are currently planned will be sent in our summer newsletter.
- Please consider getting involved, we need you!





# Q is for...Quick Good-Byes

Quick good-byes leave dry eyes!



# R is for...Resource Classes

Kindergartners will rotate resource classes each day with their class.

Guidance – Diana Ambrose

Music – Erin Machmiller

Art – Abbey Matthews

Spanish – Lina Cook

PE - Coach Heath Storey and Coach Danielle Fontana

STEM – Mark Adams

Media Center – Abby Bergmann and Susan Sherman





# S is for...Staggered Start

- Mill Creek Academy uses staggered start for kindergarten students.
- This year, on your student's staggered start day, we will ask you arrive at 8:35am and park in the parent parking lot.
- Parents may walk students to their classroom on staggered start morning only to meet their teacher.



# T is for...Transportation

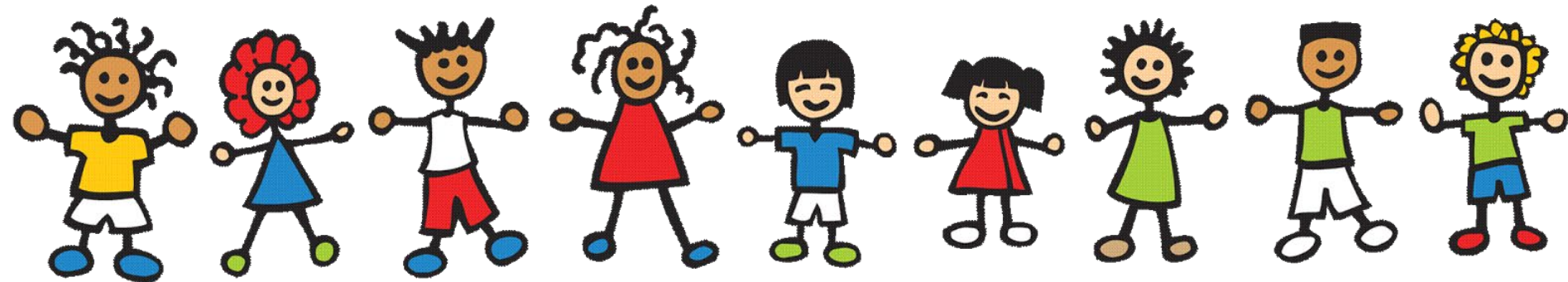
- Teachers and staff will assist students to their designated location during arrival and dismissal time.
- Bus information will be communicated by our Transportation Department.
- Please make sure your student rides the bus to and from school the first day they ride the bus. You are more than welcome to follow the bus to the school to ensure your student arrives safe. Please remember to park and watch from the parking lot this year.





# U is for...Unique

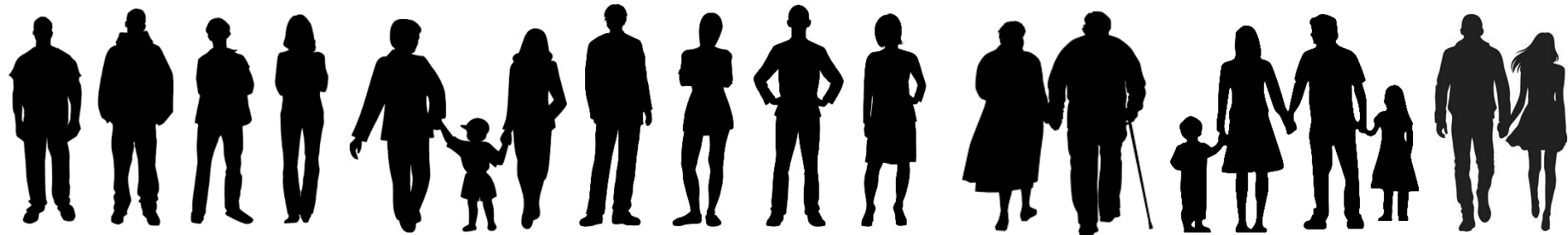
- Kindergarten students learn they are special and unique.
- Kindergartners have opportunities to describe how they are alike, as well as how they are different from others.
- This is how we learn to be writers!



# V is for...Visitors

As required by Florida state law, everyone MUST have School Access approval to go beyond the front office at Mill Creek Academy. Go to <https://www.stjohns.k12.fl.us/volunteer/> to apply for approval.

Visitors and volunteers must be on official school business by appointment to enter. Due to capacity, visitors will not be able to come in to visit their student during lunch.



# W is for...

## early release Wednesdays

- St. Johns County Schools have early-release Wednesday.
- Mill Creek Academy will dismiss at 1:45 PM every Wednesday.

**WEDNESDAY**

# X is for...eXtra Clothes

Please make sure to have a pair of extra clothing, including under garments, in your child's backpack should those be needed.



# Y is for...You!

*You are a vital part of your child's education*

## Parent Leadership Expectations

- Play an active role in your child's education by communicating with teachers or staff members.
- ***Check your child's planner/folder daily for important information.***
- Talk to your child about their school day.
- Support MCA LEAD expectations and celebrate students for good character and always doing their best.
- Treat all citizens with respect. (Faculty, staff, students and other parents).
- Have **HIGH EXPECTATIONS** for your child both behaviorally and academically.





# Z is for...ZZZ's

Please make sure your child is well-rested.

